

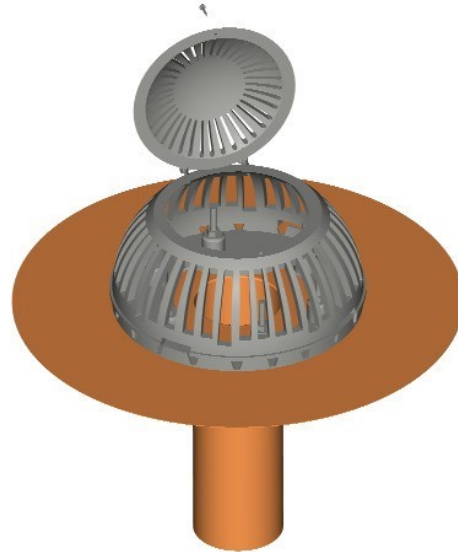
## ULTRA MEK DOME COPPER DRAIN

### DESCRIPTION

The *Ultra Mek Dome* copper roof drain is a set made of the *Murphco Ultra\** copper roof drain equipped with 6 anchoring screws soldered to the drain flange as basic element, capped with an aluminum *Super-Dome\*\** strainer.

The strainer is soldered to a rigid aluminum tightening collar, pre-drilled for the bolting and the anchoring to the drain flange.

The cast-aluminum dome strainer is equipped with a cap that protects the drainage system against vandalism and enables necessary access for maintenance.



The strainer and the tightening collar may be installed and removed easily.

They are simply fixed to the drain with the help of 6 hexagonal nuts.

The strainer cap is held in place by 2 rivets and one screw, thus ensuring a complete **anti-vandalism** assembly.

Use: recommended for all types of flat roofs (industrial, commercial, residential & institutional).

The *Ultra Mek Dome* copper roof drain is distinguished by its unique and complete anti-vandalism design.

It is made exclusively of very strong and compatible materials, resistant to time weathering.

### MATERIALS AND DIMENSIONS

Drain:	See technical data sheets of <i>Murphco Ultra*</i> copper roof drain with diameter flange of 18 <sup>7/8</sup> " (450 mm);
Dome strainer:	Cast-aluminum dome strainer <i>Super Dome**</i> with aluminum opening cap fixed with 2 rivets;
Tightening collar:	Pre-drilled rigid aluminum circular plate: <ul style="list-style-type: none"><li>- Thickness = 0.197" (5 mm)</li><li>- Exterior diameter = 10.236" (260 mm)</li><li>- Interior diameter = 6" (152 mm)</li><li>- Alloy = 6061T6</li><li>- ASTM = QQA 250 111F</li></ul>
Aluminum solder:	2 diametrically positioned continuous aluminum solders tying the strainer to the tightening collar.
Bolts, washers and nuts:	Stainless steel of 1/2" (13 mm) diameter.
Bolt and copper flange soldering:	MIG process solder
Screw:	Stainless steel

\* Mark of Les Produits Murphco Ltée, see appropriate technical data sheet

\*\* Trade mark of OMG Inc.

## ULTRA MEK DOME COPPER DRAIN

Standard dimensions			
D(interior)	Th	F	L
2 " (51 mm)	0.050" (1,27 mm)	Diameter 18" (450 mm)	12" & 18" (300 & 450 mm)
2 <sup>5</sup> / <sub>8</sub> " (67 mm)	0.050" (1,27 mm)		
3 "(76 mm)	0,045" (1,14 mm)		
3 <sup>5</sup> / <sub>8</sub> " (92 mm)	0,072" (1,83 mm)		
4" (102 mm)	0.058" (1,47 mm)		
4 <sup>5</sup> / <sub>8</sub> " (117 mm)	0,090" (2,29 mm)		
5" (127 mm)	0,072" (1,83 mm)		
5 <sup>5</sup> / <sub>8</sub> " (143 mm)	0,090" (2,29 mm)		
6 " (152 mm)	0,082" (2,08 mm)		

### COMPATIBILITY OF MATERIALS

The cast aluminum of the dome strainer is an "active" metal which will corrode, lightly over a long period of time due to oxidation under wet conditions. Such corrosion is negligible, because of the quality and thickness of the cast aluminum of the dome strainer. As for the copper flange, this "passive" metal will never be altered in quality by its natural oxidation, so that the long term performance of the copper drain is acquired.

### DIMENSIONS

Dome strainer	Cap	Tightening collar
Height : 4" (102 mm)	Height : 11/2" (38 mm)	Thickness : 0.197" (5 mm)
Diameter: 10" (258 mm)	Diameter: 67/8" (175 mm)	Exterior diameter : 10.236" (260 mm)
Standard orifice: 1.35 po <sup>2</sup> (875 mm <sup>2</sup> ), 1.55 in <sup>2</sup> , (1000 mm <sup>2</sup> ), 0.65 in <sup>2</sup> (420 mm <sup>2</sup> ),	Standard Orifice: 1.35 in <sup>2</sup> (875 mm <sup>2</sup> )	Interior diameter : 6" (152 mm)
		Standard orifice: 0.26 in <sup>2</sup> (170 mm <sup>2</sup> )

### CHARACTERISTICS

- The concept of this drain is similar to the one of a standard mechanical drain, where the membrane is tightened between the drain flange and the tightening collar, but without the disadvantages of the extension piece whose gaskets may dry out and loosen as well as the thinning of the membrane layers which represent long-term infiltration risks;
- This six bolts tightening collar offers a better performance against tensile stress and movement of the membrane, as it is of a much larger flange than on the standard mechanical drains;
- Strong assembly;
- This drain may be used with all types of membranes for flat roofs;
- For the installation recommendations, see *Murphco Ultra*\* technical data;
- Unique and complete anti-vandalism design;
- Opened riveted cap of the strainer;
- All the materials are made of copper and stainless steel insuring a remarkable life expectancy.

\* Mark of Les Produits Murphco Ltée, see appropriate technical data sheet

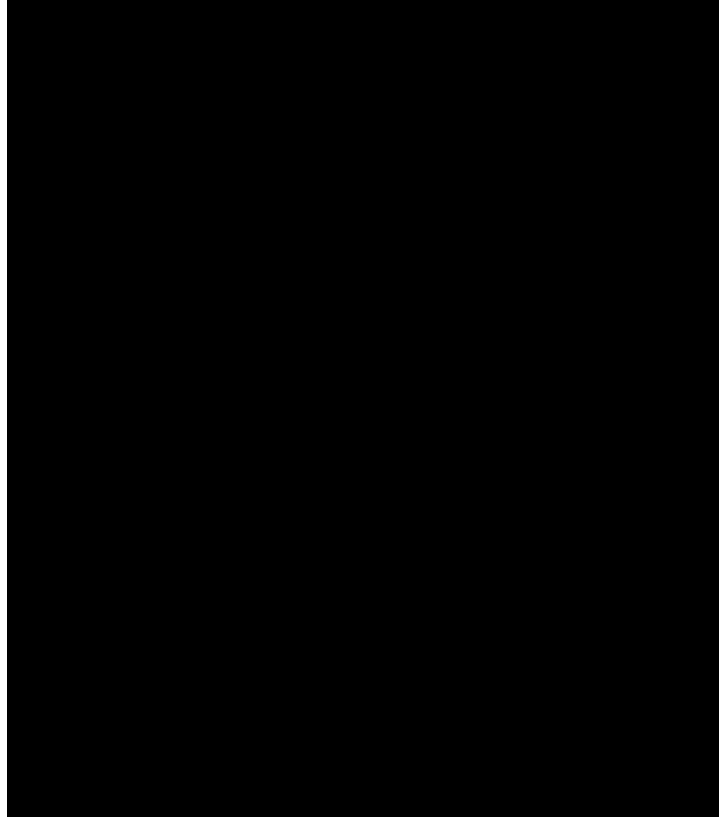
\*\* Trade mark of OMG Inc.

## ULTRA MEK DOME COPPER DRAIN

### INSTALLATION

This roof drain assembly can be used with all types of membranes, on flat roofs.

For the membrane installation method and also for the connection into the interior rainwater leader, please refer to the technical data sheets of *Murphco Ultra\**, copper roof drain, and see page 7 of the present document.



### FEATURES & WARRANTY

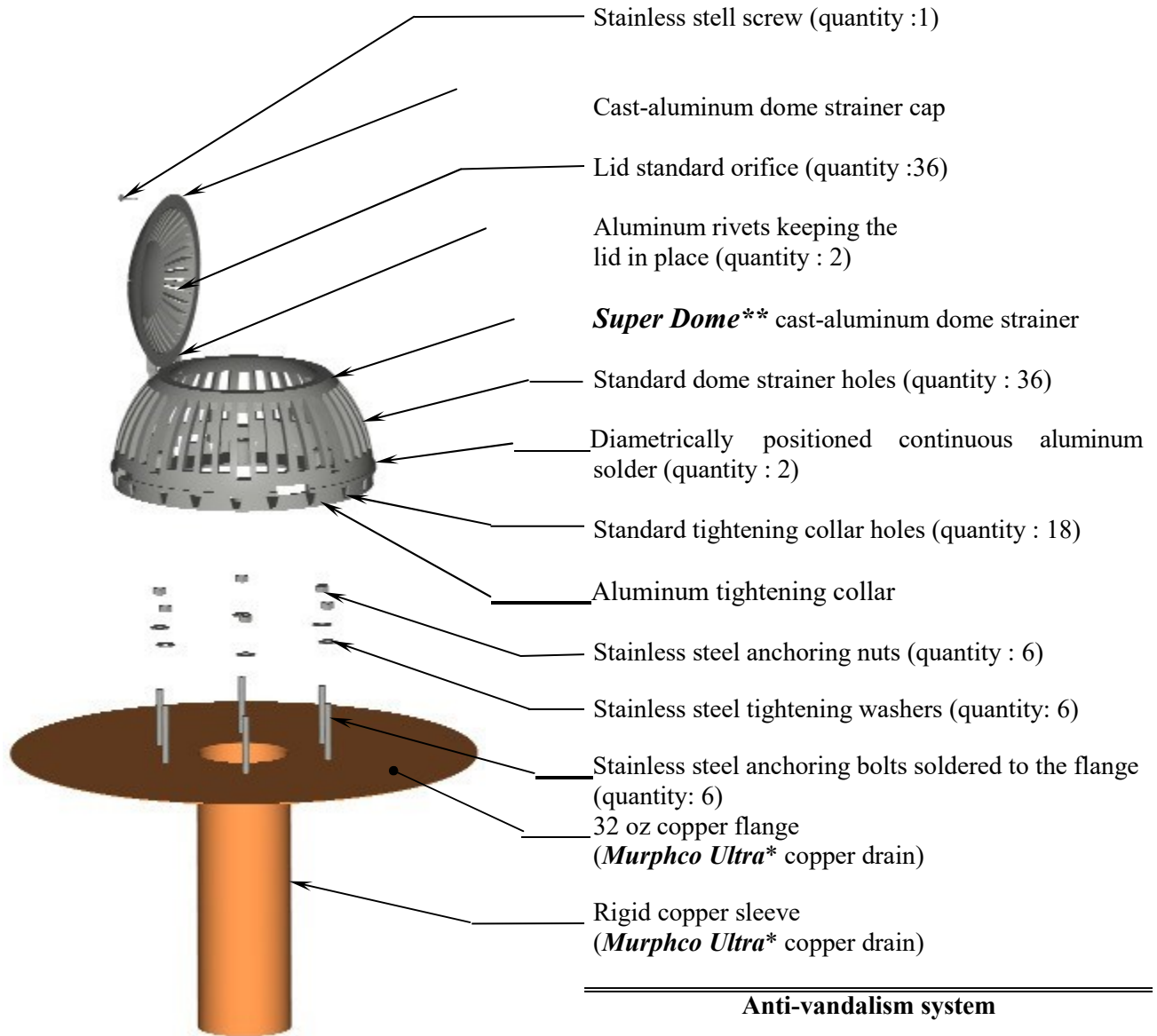
- Easy installation of the dome strainer;
- Solid and durable dome strainer hold system;
- Stability of the membrane and long-term performance;
- Rigid copper drain sleeve, without joint, clip and vertical solder;
- 32 oz copper flange folded down in the sleeve with the patented *Murphco* punch;
- Compatible with U-Flow™ seal, clamp collar and coupling sleeve for a maximum flow;
- Durability, quality and industrial grade;
- Life time warranty against corrosion;
- Guaranteed against fabrication defects.

\* Mark of Les Produits Murphco Ltée, see appropriate technical data sheet

\*\* Trade mark of OMG Inc.

## ULTRA MEK DOME COPPER DRAIN

### ASSEMBLY



\* Mark of Les Produits Murphco Ltée, see appropriate technical data sheet

\*\* Trade mark of OMG Inc.

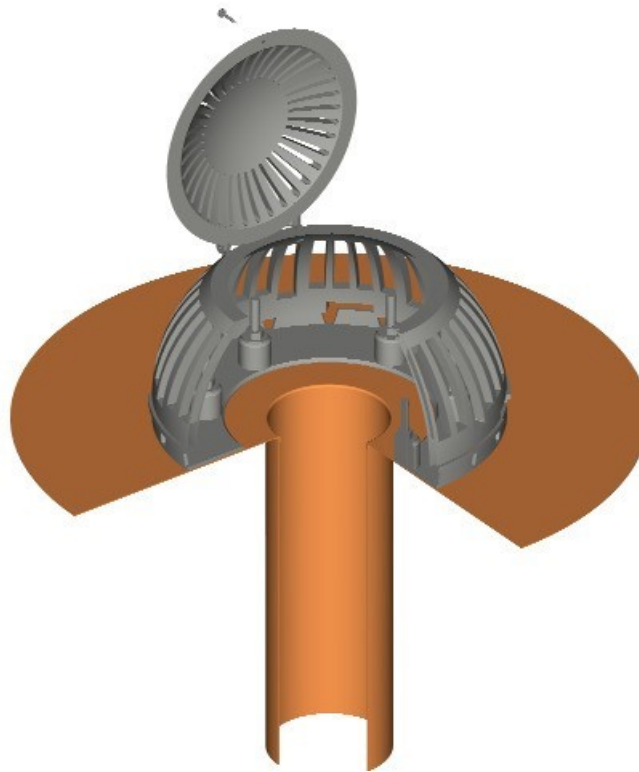
## **ULTRA MEK DOME COPPER DRAIN**

### USUALLY SUPPLIED

When you buy an *Ultra Mek Dome* copper drain, you get:

- 1 *Murphco Ultra*\* copper drain equipped with 6 stainless steel anchoring bolts soldered to the flange;
- 1 *Super Dome*\*\* cast aluminum dome strainer soldered to an aluminum tightening collar;
- 1 open aluminum dome strainer lid fixed to the dome strainer with 2 aluminum rivets;
- 6 stainless steel anchoring nuts;
- 6 stainless steel tightening washers;
- 1 stainless steel screw.

### EXPLODED VIEW OF THE *ULTRA MEK DOME* COPPER ROOF DRAIN



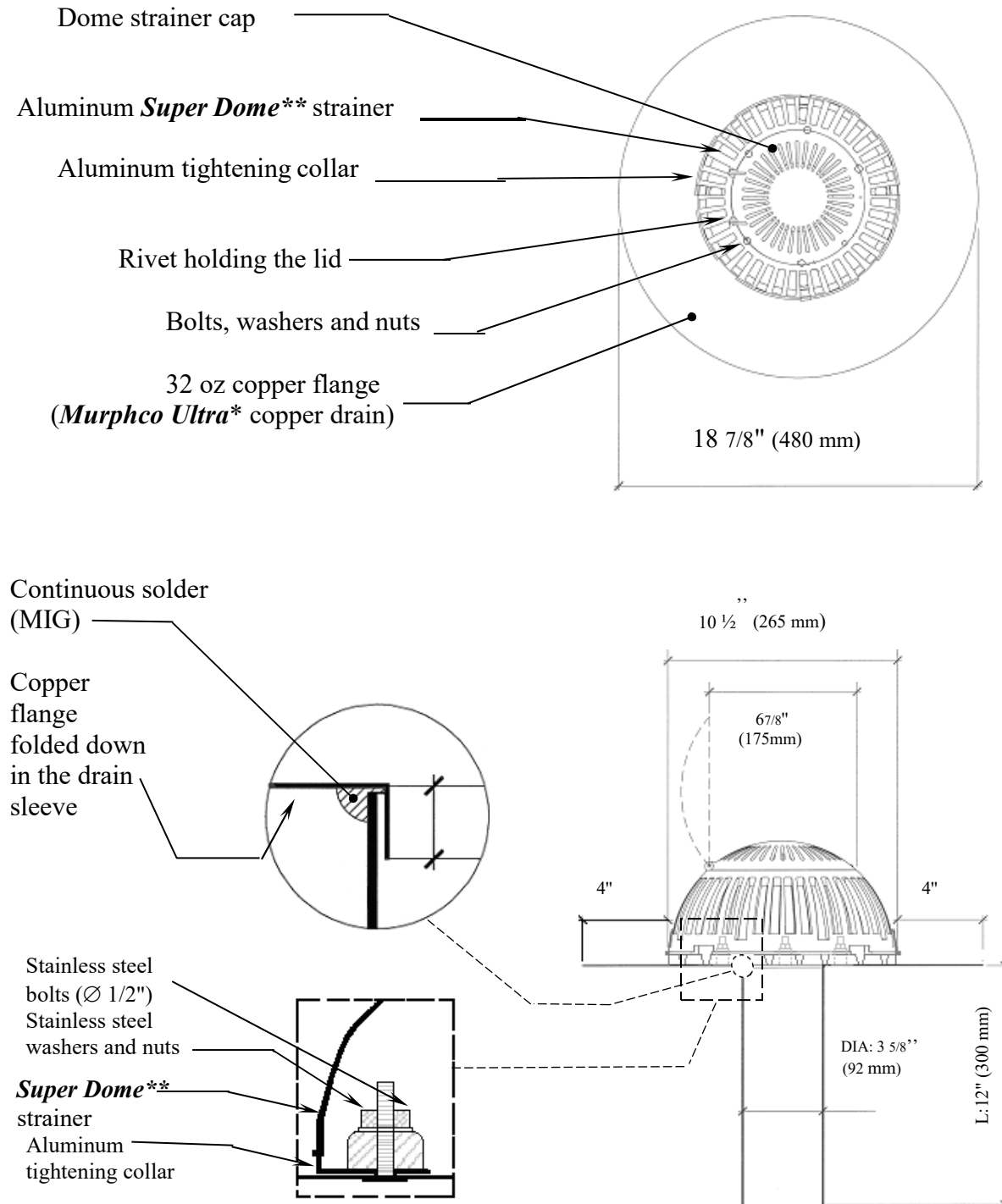
Notice to plumbing / roofing contractor: When a copper drain sleeve must be cut for adjustment to appropriate length, avoid the use of vibrating tools that could generate fissures in the copper flange or sleeve along the solder. Rather utilize a circular cutter.

\* Mark of Les Produits Murphco Ltée, see appropriate technical data sheet

\*\* Trade mark of OMG Inc.

## ULTRA MEK DOME COPPER DRAIN

### DRAIN SECTION

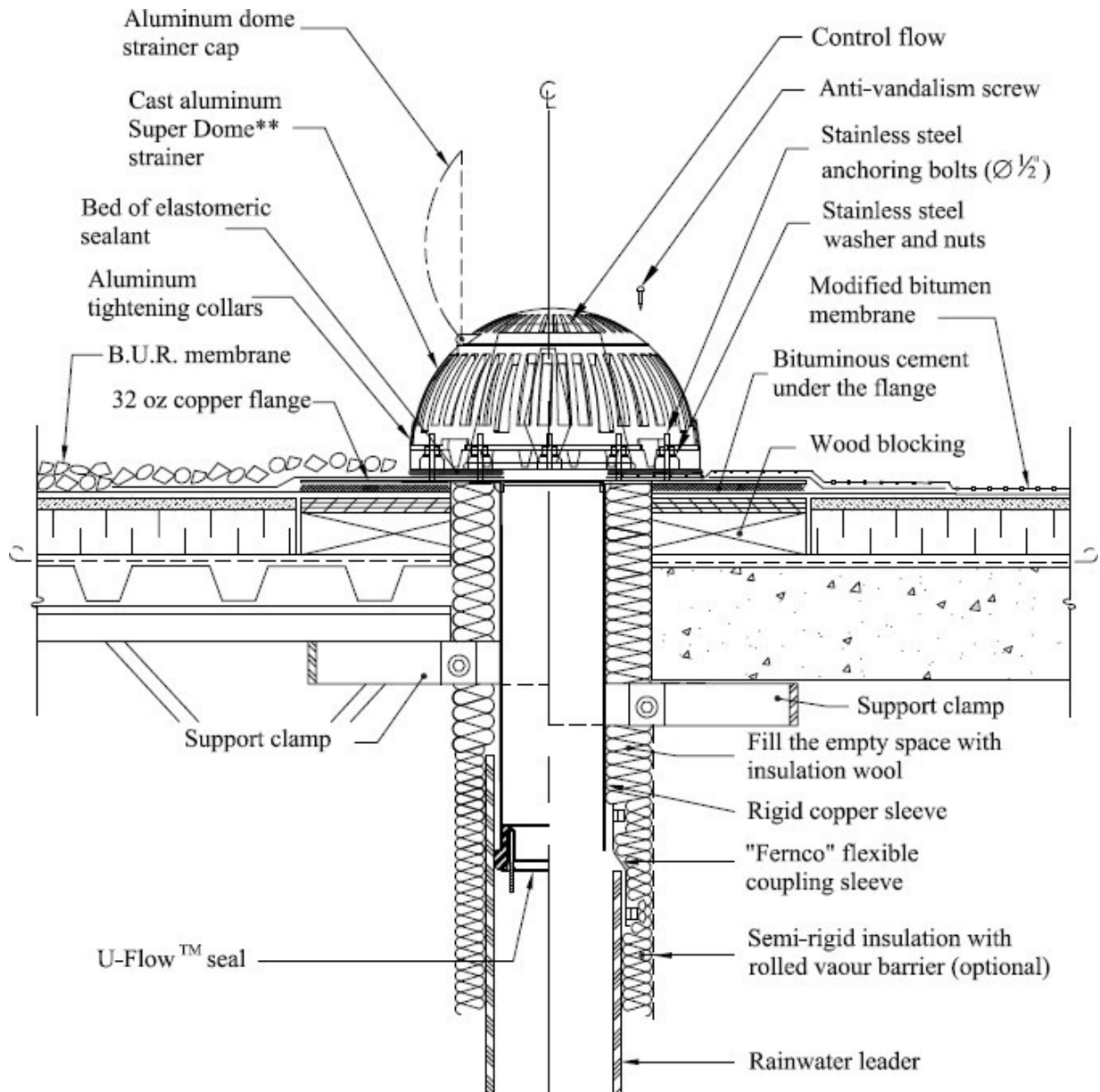


\* Mark of Les Produits Murphco Ltée, see appropriate technical data sheet

\*\* Trade mark of OMG Inc.

## ULTRA MEK DOME COPPER DRAIN

### TYPICAL DETAIL



**Application field :** The plumbing installation should be made in conformity with the appropriate provincial, territorial or municipal rules or, in absence of such regulation, with the current Canadian Plumbing Code.

\* Mark of Les Produits Murphco Ltée, see appropriate technical data sheet

\*\* Trade mark of OMG Inc.

## **ULTRA MEK DOME COPPER DRAIN**

DESIGNED AND MANUFACTURED BY LES PRODUITS MURPHCO LTÉE

---

Technical assistance or further information may be obtained from:



Manufacturier et spécialiste de drains de toiture

Boutique de Métal en feuille

4955, rue Brock Montréal, Qc, H4E 1B5

Tél : (514) 937-3275 Fax : (514) 937-6797

Site web : [www.produitsmurphco.com](http://www.produitsmurphco.com) Courriel : [info@produitsmurphco.com](mailto:info@produitsmurphco.com)

DOCUMENTATION PREPARED WITH THE TECHNICAL COOPERATION OF:

---

### **Englobe**

1200, boul. Saint-Martin Ouest, bureau 400

Laval (Québec) H7S 2E4

T 514.281.5173

F 450.668.5532

[info@englobecorp.com](mailto:info@englobecorp.com)

### NOTICE

---

The information and specification provided in this document are applicable at time of publication. They are condensed from the exact results obtained through real tests and field experience, but may not be construed as implying any absolute and final dictate on our part. **Les Produits MURPHCO Ltée** Reserves the right to modify, without notice, the information provided in the present document, as a result of its research and development policy on its products.

---

\* Mark of Les Produits Murphco Ltée, see appropriate technical data sheet

\*\* Trade mark of OMG Inc.