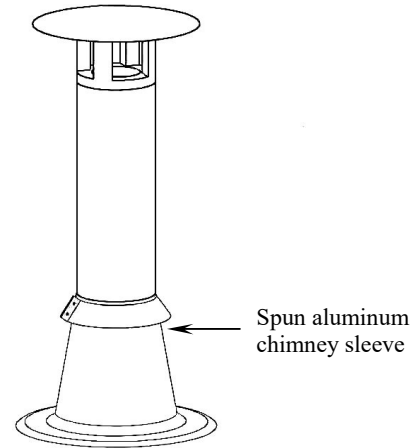


## SPUN ALUMINUM CHIMNEY SLEEVE

### DESCRIPTION

The Murphco spun aluminum chimney sleeve is shop fabricated in one piece (without joint and solder) with a proven lathe. The main purpose of the sleeve is to assure the watertightness around a chimney pipe, at roof level.

The shop fabricated aluminum clamping collar, with the corresponding diameter, completes the sleeve waterproofing in a simple application.



### MATERIALS

Aluminum: -Series 1100  
-Sleeve thickness: 0.064" (1.62 mm)  
-Clamping collar thickness: 0.032" (0.81 mm)  
-2 stainless steel screws

### COLOR

Color: bare aluminum

### INSTALLATION

#### Sleeve:

This type of sleeve is used on roofs covered with B.U.R. asphalt felt and gravel surface membranes, modified bitumen membranes or other prefabricated PVC and EPDM membranes.

Standard models 2004, 2006, 2008 and 2010 sleeves are fabricated to assure the watertightness around the circular chimney pipes of an exterior diameter from 100 @ 250 mm (4" @ 10").\*\*

To seal the sleeve to the membrane, it is recommended to prime the base flange on both faces, with a primer compatible with the membrane materials. Set the base flange of the sleeve into a bed of bituminous cement. Apply a second trowel layer of bituminous cement to seal the superior face of the flange.

## SPUN ALUMINUM CHIMNEY SLEEVE

Flash-in the metal flange with 2 plies of cotton fabric and 1 ply of roofing felt into hot bitumen (B.U.R.).\*

For modified bitumen membrane system, apply a reinforcing base flashing ply from the base of the sleeve and 6" wider than the edge of the flange, then apply the cap sheet continuously. Apply a circular elastomeric caulking joint around the sleeve on the finished membrane.\*

Prior to the sleeve installation, it is recommended to cover the lower section of the chimney pipe with mineral wool insulation.

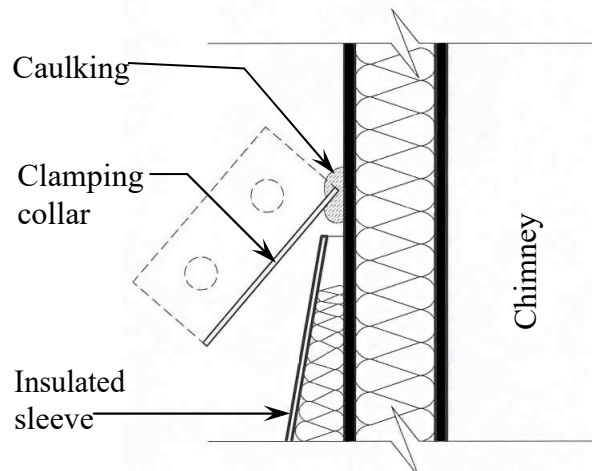
### Clamping collar:

The cap must be installed to ensure the watertightness of the free space between the interior chimney pipe and the aluminum sleeve.

-Prior to the clamping collar application, it is recommended to apply a continuous bituminous cement ribbon or a compatible caulking ribbon between the interior surface of the flange and the exterior surface of the pipe.

-Firmly tighten the clamping collar on the chimney pipe with the two supplied stainless steel screws in the flange fold.

-The clamping collar must be placed to spread the caulking and for the caulking to emerge from the top of the collar.



## FEATURES AND GUARANTY

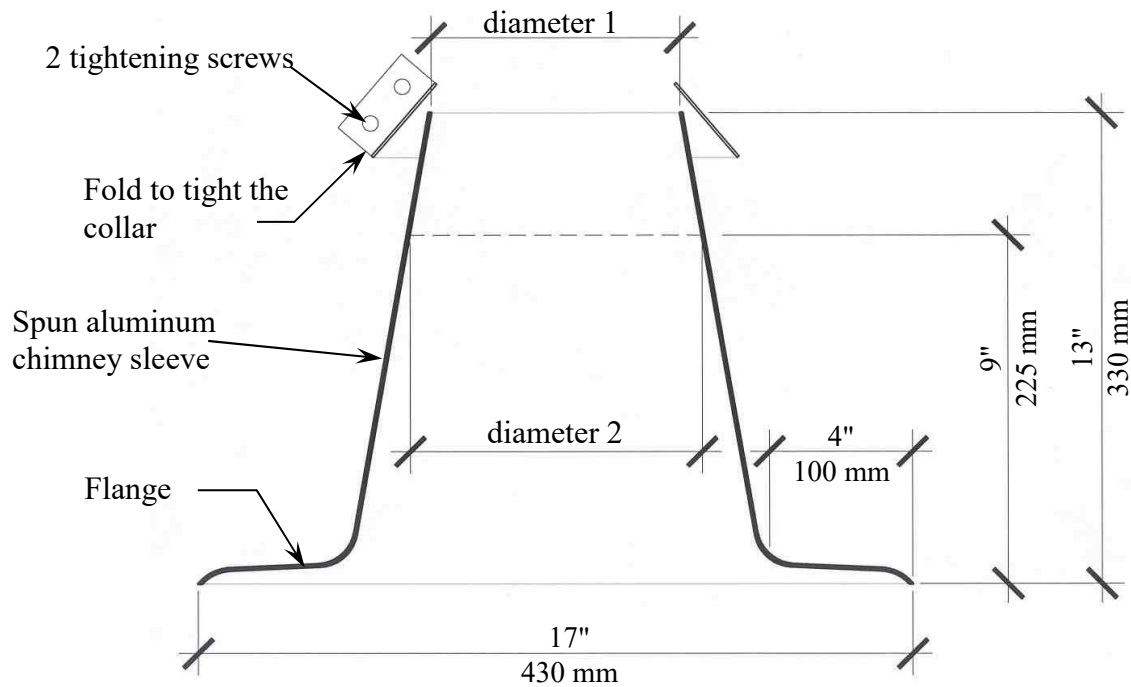
- Built in one piece;
- Without fabrication joint;
- No solder;
- Sturdy;
- Economical;
- Easy and fast to install;
- Anti-vandalism;
- Guaranteed against corrosion;
- Guaranteed against fabrication defects.

\* Follow the recommendations of the membrane manufacturer

\*\* The diameters of sleeve and chimney pipes are the nominal rounded values

## SPUN ALUMINUM CHIMNEY SLEEVE

### SLEEVE SECTION



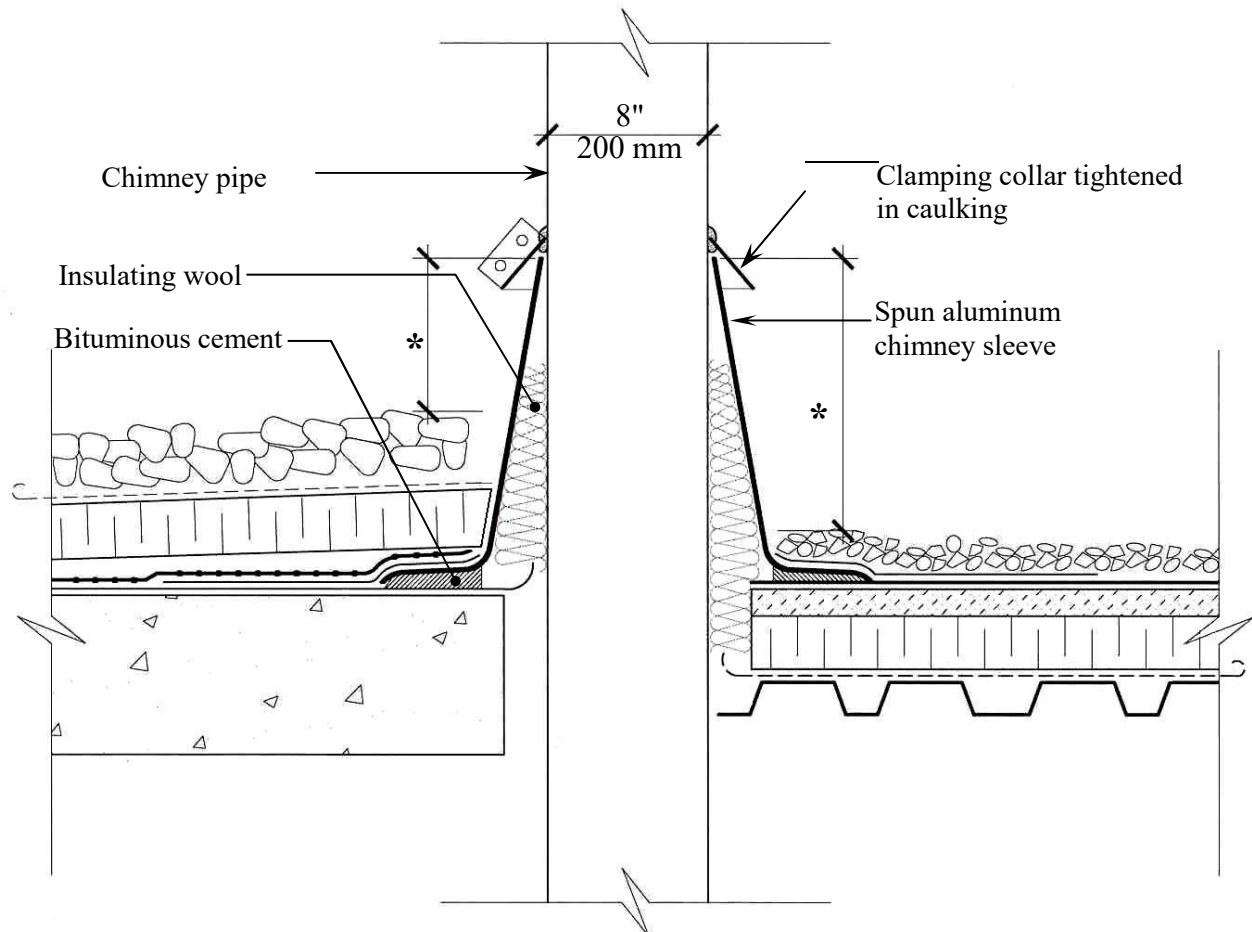
	DIAMETER 1		HEIGHT		DIAMETER 2 *		HEIGHT	
	INCH	MM	INCH	MM	INCH	MM	INCH	MM
2004-5	4	100	13	330	5	175	9	225
2006-8	6	150	13	330	8	200	9	225
2008-10	8	200	13	330	10	250	9	225
2010-12	10	250	13	330	12	305	9	225

Nominal rounded values

\* On the site, the top of the sleeve may be cut by the contractor to provide a wider diameter and maintain as well the recommended height.

## SPUN ALUMINUM CHIMNEY SLEEVE

### TYPICAL DETAIL



TYPICAL DETAIL  
WITH INVERTED SYSTEM

TYPICAL DETAIL  
WITH CONVENTIONAL SYSTEM

\* In accordance with the minimum standards of the Quebec Master Roofers Association, it is recommended to have a minimum height of 8" above the finished roof level.

## SPUN ALUMINUM CHIMNEY SLEEVE

DESIGNED AND MANUFACTURED BY LES PRODUITS MURPHCO LTÉE

---

Technical assistance or further information may be obtained from:



Manufacturier et spécialiste de drains de toiture

Boutique de Métal en feuille

4955, rue Brock Montréal, Qc, H4E 1B5

Tél : (514) 937-3275 Fax : (514) 937-6797

Site web : [www.produitsmurphco.com](http://www.produitsmurphco.com) Courriel : [info@produitsmurphco.com](mailto:info@produitsmurphco.com)

DOCUMENTATION PREPARED WITH THE TECHNICAL COOPERATION OF:

---

### Englobe

1200, boul. Saint-Martin Ouest, bureau 400

Laval (Québec) H7S 2E4

T 514.281.5173

F 450.668.5532

[info@englobecorp.com](mailto:info@englobecorp.com)

### NOTICE

---

The information and specification provided in this document are applicable at time of publication. They are condensed from the exact results obtained through real tests and field experience, but may not be construed as implying any absolute and final dictate on our part. **Les Produits MURPHCO Ltée** Reserves the right to modify, without notice, the information provided in the present document, as a result of its research and development policy on its products.

---