

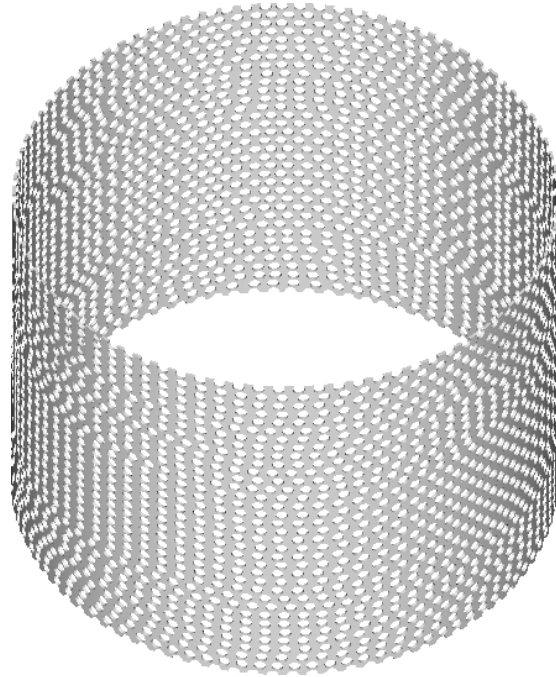
MURPHCO BALLAST-GUARD

DESCRIPTION

The rigid perforated stainless steel "**Murphco Ballast-Guard**" is designed to protect the roof drain opening on a flat inverted roofing system.

It may be assembled with the **Murphco Ultra*** rigid copper roof drain as well as with any other type of flat roof drain.

Such "**Ballast-Guard**" shall prevent the fall of crushed stone, river bed gravel or any other ballast into the drain opening while providing an easy access for drain cleaning or other maintenance purposes.



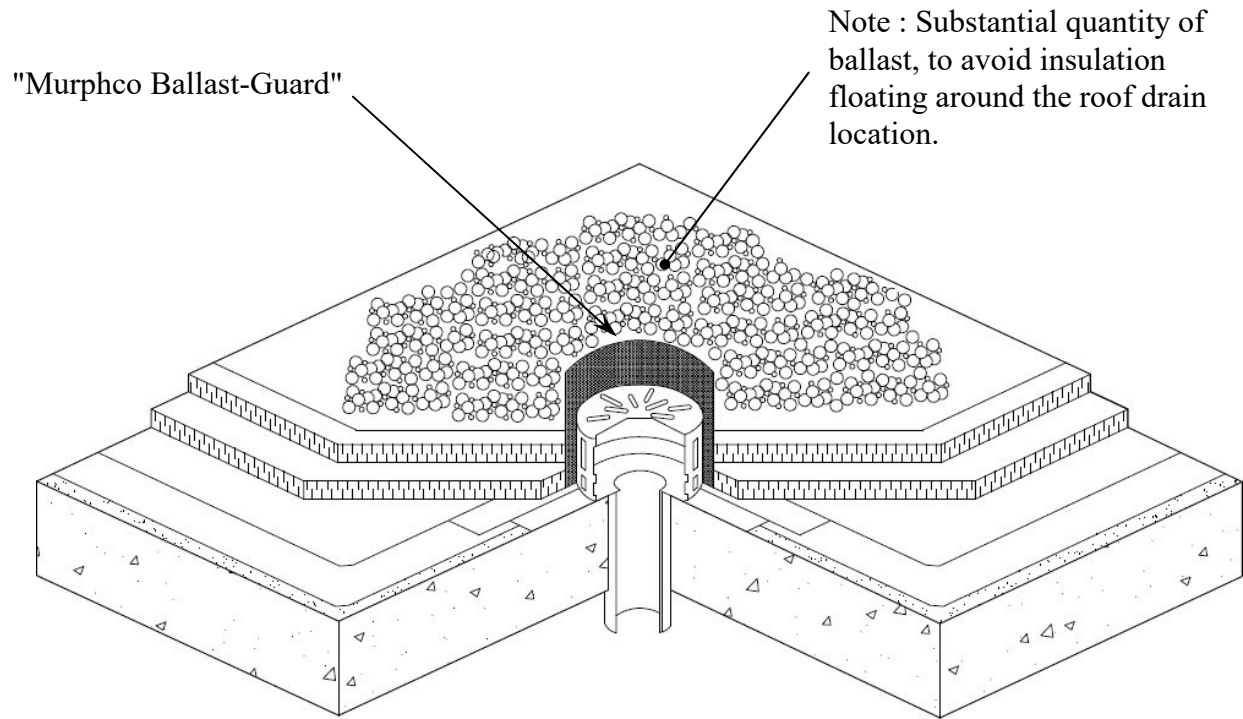
The "Murphco Ballast-Guard" may be used on various types of inverted roof surfaces, such as regular crushed stone, river bed gravel, tile terrace decks or "Green Roofs".

CHARACTERISTICS

- Designed for inverted roofing systems;
- Simple and easy installation method;
- Removed and reinstalled easily for maintenance purpose;
- Stainless steel base material, anti-corrosive and durable;
- No anchorage to other roof component.

MURPHCO BALLAST-GUARD

INSTALLATION



The "*Murphco Ballast-Guard*" is installed at the top of the insulation layers, on the filter sheet, in the inverted roofing system, in order to prevent the fall of ballast into the drain opening.

For installation direction, see page 6 and/or refer to *Murphco Ultra** roof drain data sheet.

FEATURES

- Mainly for flat roofs (inverted systems);
- Perforated stainless steel sleeve, vertical joint soldered (MIG);
- Anti-corrosive and durable material, lifetime warranty;
- No water flow reduction;
- Anti-vandalism assembly upon request;
- Variable height on special order.

MURPHCO BALLAST-GUARD

WARRANTY

- Warranty against corrosion;
- Guaranteed against fabrication defects.

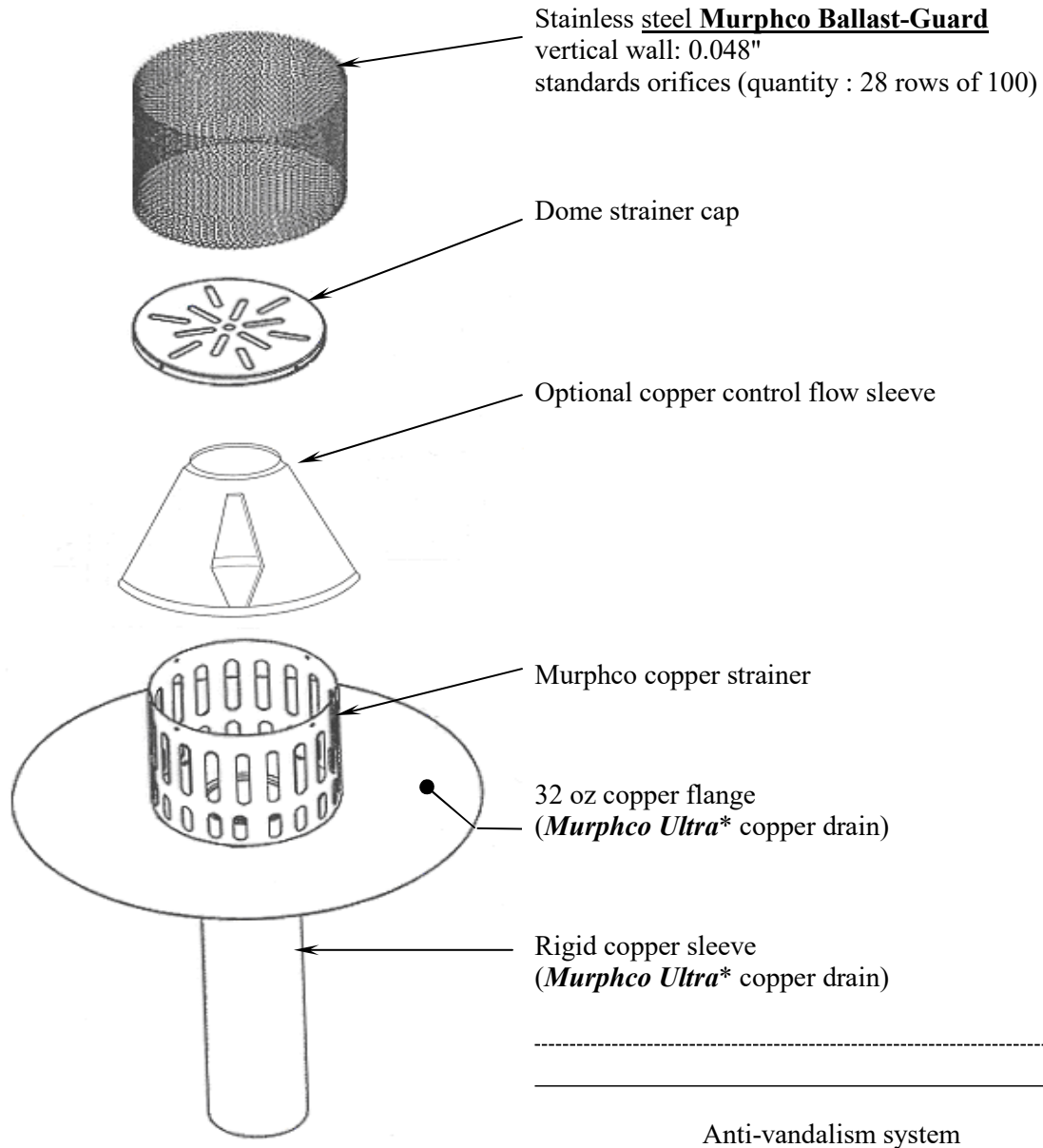
MATERIALS

- Ballast-guard: - vertical side: stainless steel (0.048", 1.122 mm),
with 28 rows of 100 standard orifices de ((3/16") 0.187", 4.762 mm) each.
- Solder: *MIG* process solder

Standard dimensions		
Murphco Ballast-Guard		
Height	6 1/8"	155 mm
Diameter	8 1/8"	208 mm
Standard orifice	0.027 in ²	17.81 mm ²
Total vertical opening	75.6 in ²	49000 mm ²

MURPHCO BALLAST-GUARD

ASSEMBLY

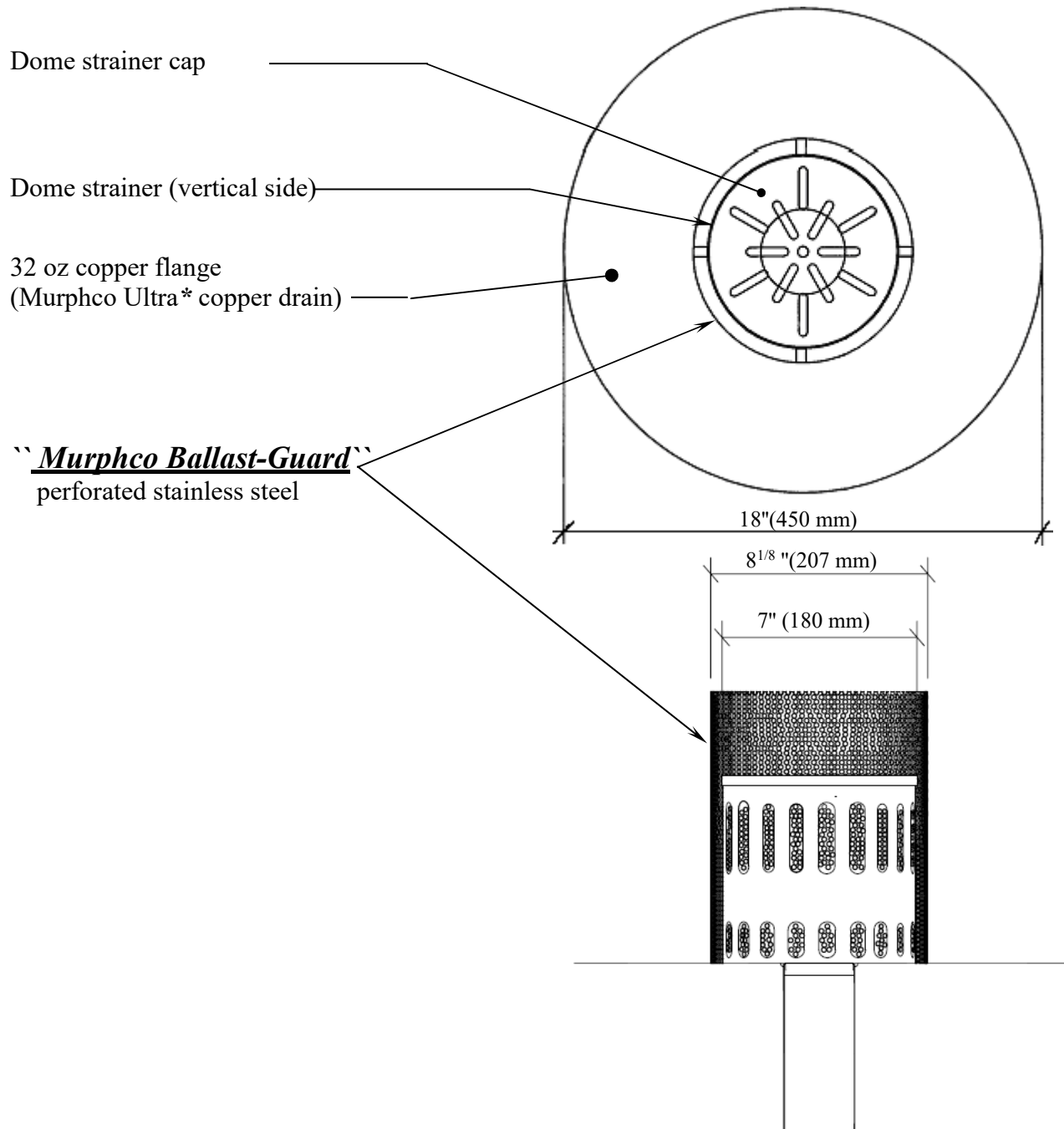


SUPPLY

When you buy a "**Murphco Ballast-Guard**", you get:
- 1 stainless steel rigid piece, easy to install, guaranteed against corrosion.

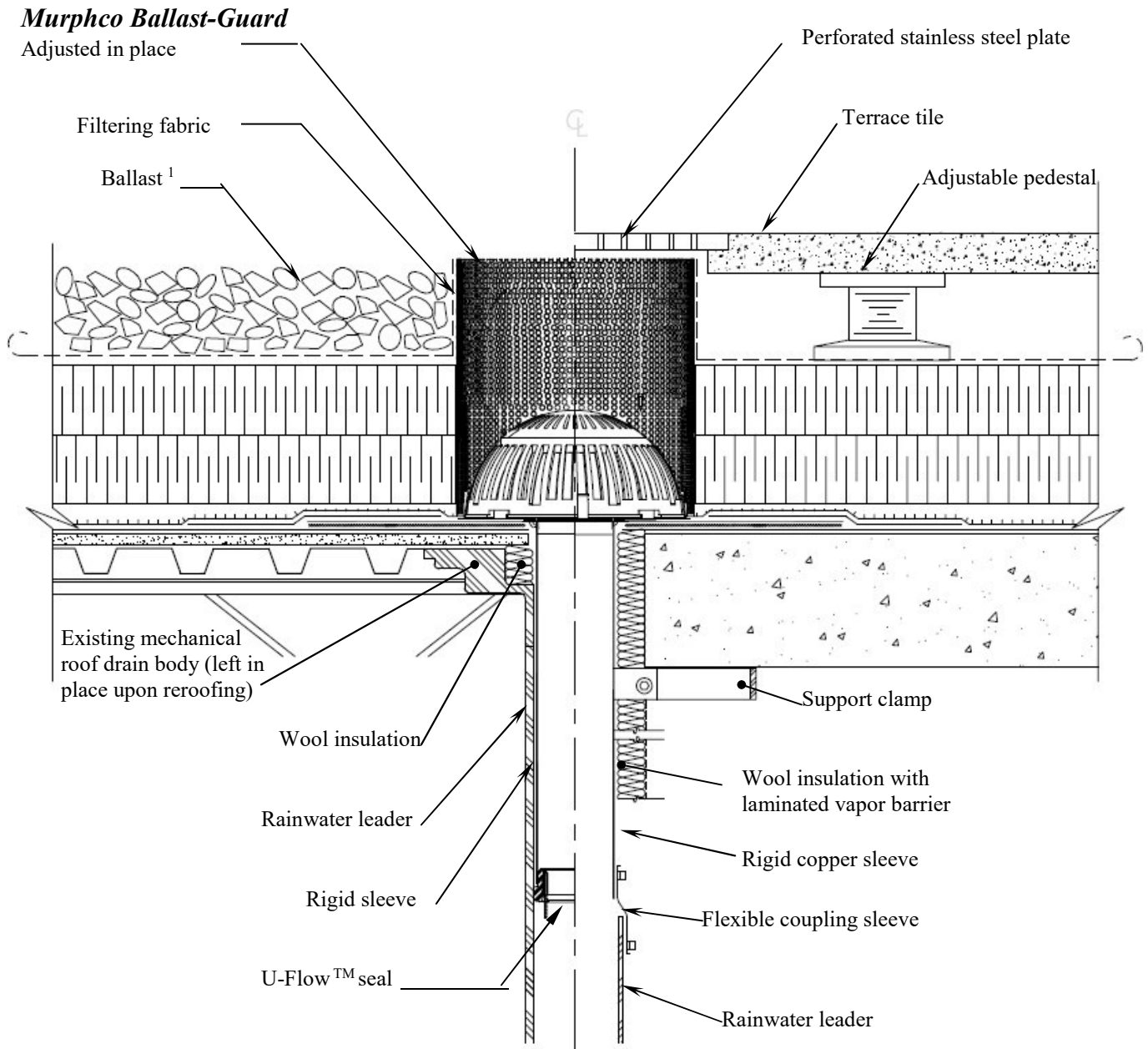
MURPHCO BALLAST-GUARD

DRAIN SECTION



MURPHCO BALLAST-GUARD

TYPICAL DETAIL



¹ sufficient ballast quantity to avoid insulation floating around drain

Application field: The plumbing installation should be made in conformity with the appropriate provincial, territorial or municipal rules or, in absence of such regulation, with the current Canadian Plumbing Code.

MURPHCO BALLAST-GUARD

DESIGNED AND MANUFACTURED BY LES PRODUITS MURPHCO LTÉE

Technical assistance or further information may be obtained from:



Manufacturier et spécialiste de drains de toiture

Boutique de Métal en feuille

4955, rue Brock Montréal, Qc, H4E 1B5

Tél : (514) 937-3275 Fax : (514) 937-6797

Site web : www.produitsmurphco.com Courriel : info@produitsmurphco.com

DOCUMENTATION PREPARED WITH THE TECHNICAL COOPERATION OF:

Englobe

1200, boul. Saint-Martin Ouest, bureau 400

Laval (Québec) H7S 2E4

T 514.281.5173

F 450.668.5532

info@englobecorp.com

NOTICE

The information and specification provided in this document are applicable at time of publication. They are condensed from the exact results obtained through real tests and field experience, but may not be construed as implying any absolute and final dictate on our part. **Les Produits MURPHCO Ltée** Reserves the right to modify, without notice, the information provided in the present document, as a result of its research and development policy on its products.